

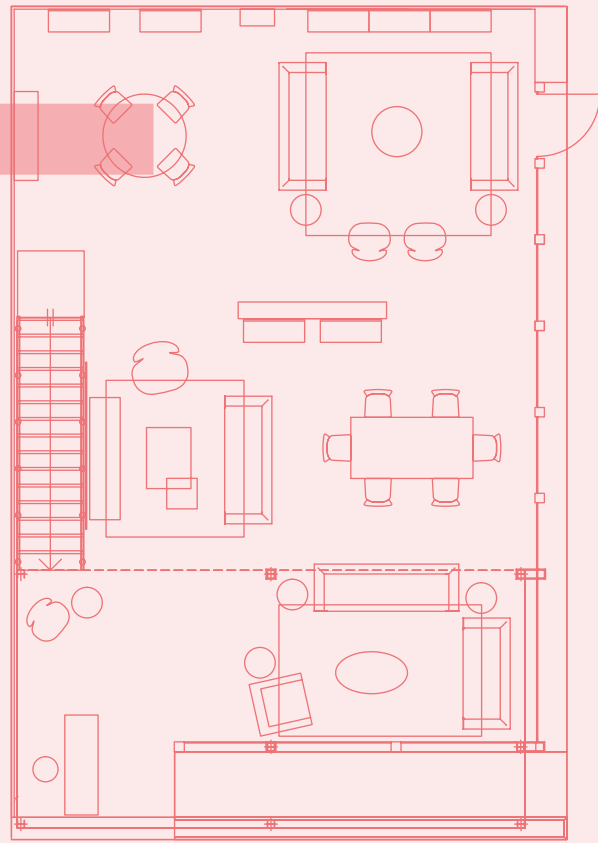
Sevensedie

S / 2019  
*New*  
i saloni

SEVENSEDIE AT

I SALONI  
MILANO  
2019

# S H22



I SALONI MILANO 2019, HALL 4 STAND H22

# CASE STUDY HOUSES



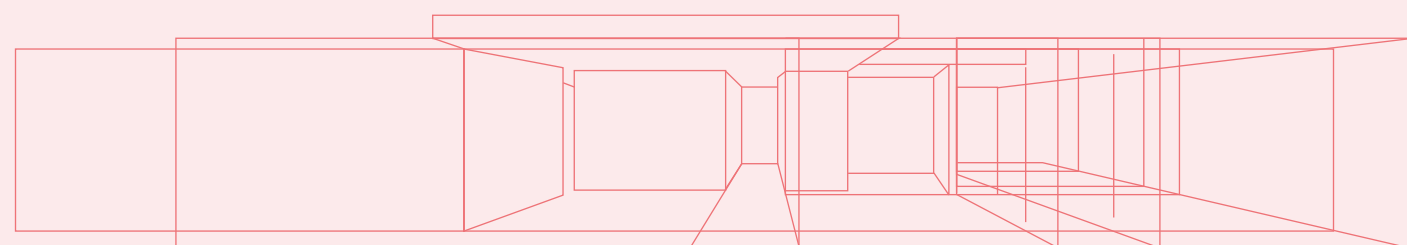
## SEVENSEDIE STAND AT I SALONI MILANO THE PROJECTS

The 2019 Milan furniture show has seen once again the Modern Collection as the protagonist, this time presented in its entirety: the inspiring theme of the stand, perfect for dialoguing with the collection and current trends, is the one of the Californian Case Study Houses (1945-1966).

This design itinerary, embracing the greatest American architects of the time (R. Neutra, E. Saarinen, C. and R. Eames, P. Koenig) looks at the two decades between 1945 and 1966 with two specific intentions: to build low-cost modular houses for soldiers returned from the front and to introduce the architectural principles of the so-called "international style".

The Case Study Houses mainly developed in California, in the city of Los Angeles. Buildings with a markedly horizontal line, immersed in the surrounding environment, characterized by large windows and constructed with few simple materials. The planimetry is free and open to create a continuous connection between its ambiances and the external green that appears to be everywhere protagonist.

This theme is perfectly suitable for Modern collection that comes from inspirations linked to the same era and that finds in this architecture the ideal surrounding and its completion. Colors, finishes, decorations and dimensions of the project establish a perfect dialogue with the Modern collection products, highlighting the most representative details and placing them in spaces designed to get as close as possible to those of your homes, of Today and Tomorrow.



Case Study House n 20  
by R. Neutra





THE NEW MODERN COLLECTION

FROM CLASSIC  
TO CONTEMPORARY  
AND NOW TO MODERN

Modern collection is available  
in several different finishes  
and is highly customizable.

MO  
DERN  
N

COLLECTION

BEST QUALITY ITALIAN FURNITURE FOR  
THE RESIDENTIAL SECTOR.





MODERN IS AN INNOVATIVE COLLECTION  
OF MODERN ITALIAN FURNITURE.





MODERN COLLECTION IS AVAILABLE  
IN SEVERAL DIFFERENT FINISHES  
AND IS HIGHLY CUSTOMIZABLE.







DISPLAY CABINETS, SIDEBARDS,  
TABLES, CHAIRS AND SOFAS.



IN MODERN WE HAVE TRY TO MIX  
REAL WOOD WITH MARBLE AND METAL  
ELEMENTS.

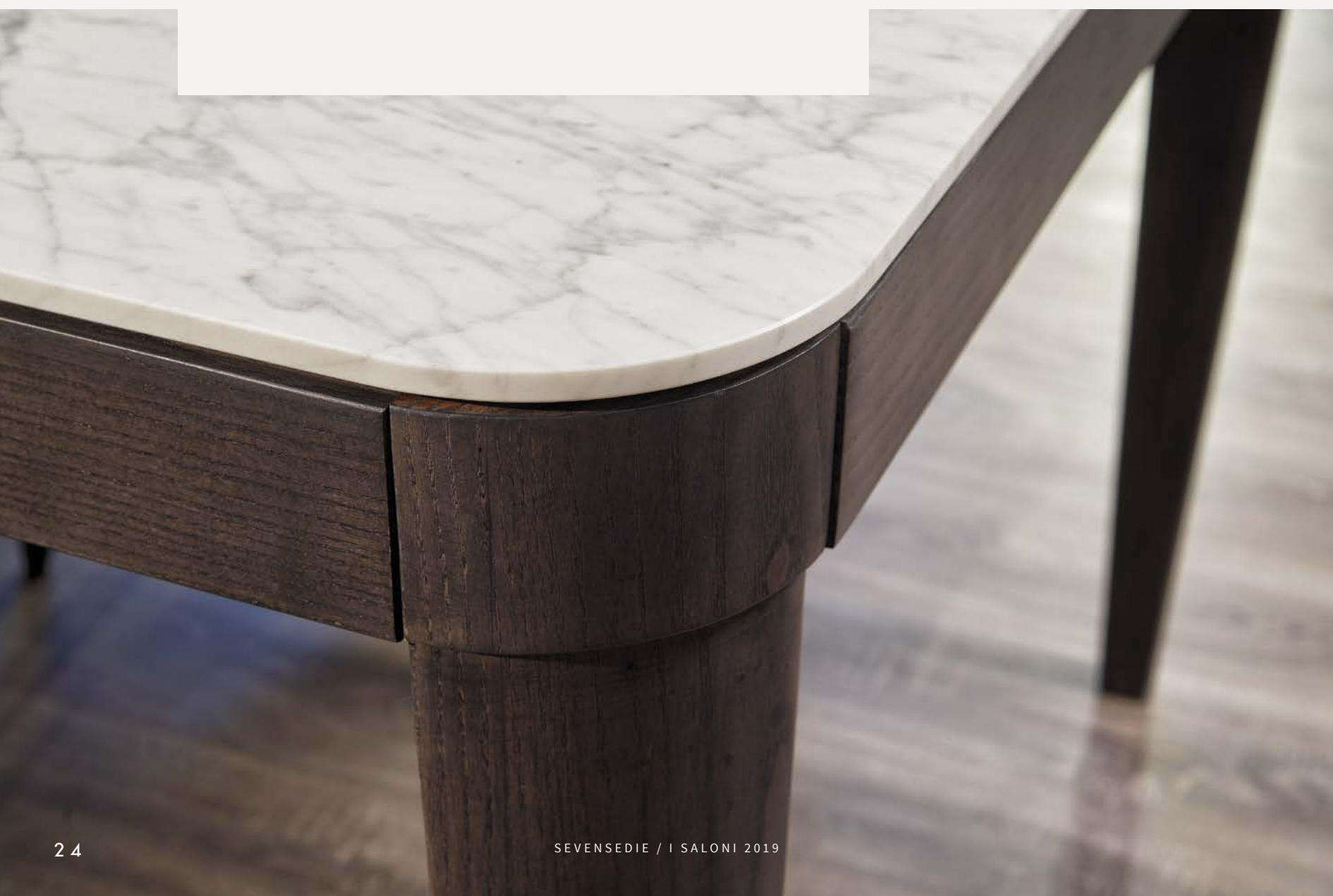






DESPITE THE CHOICE OF SOBRIETY,  
UNIQUE TRAITS ENRICHES PRODUCT LINES  
DESIGNED FOR SPACES OF A HIGH IMPACT.

EXCLUSIVE DETAILS  
WE FOCUS OUR ATTENTION TO DETAILS.







FOR "MODERN" COLLECTION WE HAVE USED WALNUT VENEER, OPEN IN FOUR QUARTERS ON TABLE TOPS AND ON CABINET BACK PANELS TO ACHIEVE AND ELEGANT AND DISTINCTIVE EFFECT.

THE SELECTION OF CURVED CUT AND EMPTY  
HANDLES IS PART OF THE MODERN COLLECTION  
ICONIC STYLE.







WE WANTED TO GIVE OUR PRODUCTS  
A PRONOUNCED PERSONALITY.







# THE NEW MODERN COLLECTION

THESE DIFFERENT MATERIALS CAN BE  
COMBINE WITH ONE ANOTHER TO SUIT  
ANY OF YOUR FURNISHING NEEDS.



NUBES  
ART. 0635F



MOON  
ART. 00TA461M



MOON  
ART. 00TA462L



CLUB  
ART. 9632P



CLUB  
ART. 9622P



CLUB  
ART. 9633P



ADA  
ART. 00CR1000



KISA  
ART. 0618S



LUCREZIA  
ART. 0608A



ARANEA  
ART. 0617A



MOON  
ART. 00TA460L



NOOR  
ART. 00CL44

NOOR  
ART. 00CL44CA



ADA  
ART. 00TA1000M



DANIMARCA  
ART. 0228S



MARCELLA  
ART. 0754P



MOON  
ART. 00VE46



MOON  
ART. 00LB46



THEO  
ART. 00TA515M



CELINE  
ART. 0615F





MYSTIRIO  
ART. 9624G



MYSTIRIO  
ART. 9624E



BOSTON  
ART. 9454P



TRIO  
ART. 00TA147EV



TRIO  
ART. 00TA143EV



**sevensedie**



Head office and factory:  
Via Ca' del Lago, 11  
37053 Cerea  
Verona, Italy

Ph. +39 0442 30 600  
Fax +39 0442 32 02 80  
sevensedie.com  
info@sevensedie.com

SEVENSEDIE

  
  
2019